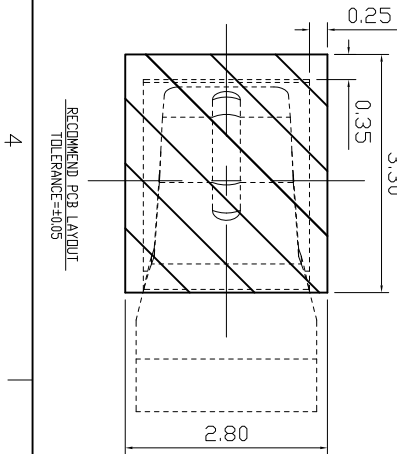



LDC
-
DIST
-



PAD OF PCB.

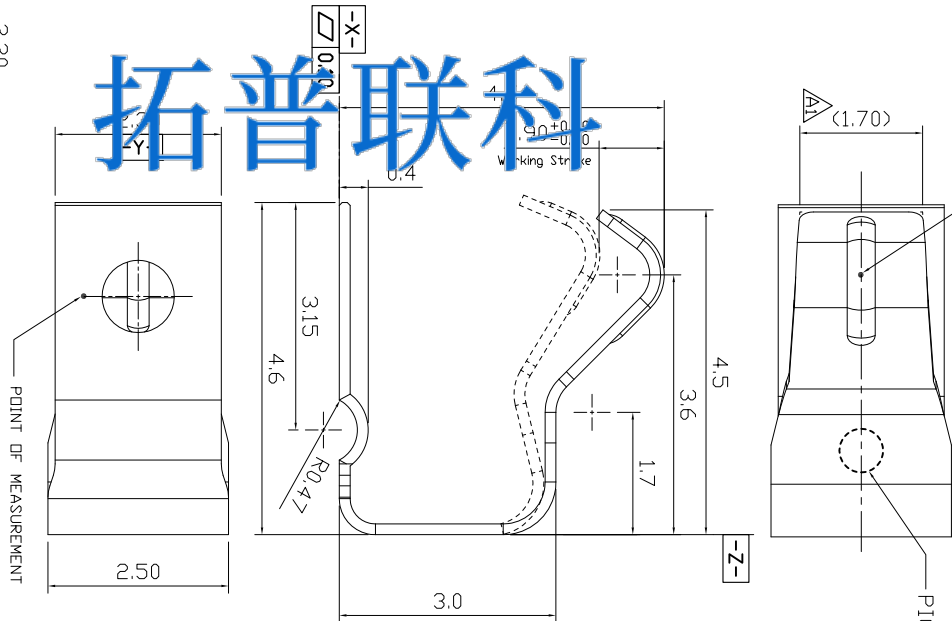
A1	Update		2015/11/06
A	NEW		
LTR	REVISION RECORD	APVD	DATE

200019-1		2	CARRIER TAPE	P=8mm	WHITE:W=12mm,0.1V/REEL=1700 Pcs
ASSEMBLY NUMBER	ITEM	1	4.5H 2.5W ANTENNA CLIPS	1Pcs	NOTES 1,2
DIMENSIONS IN MM		TOLERANCES UNLESS OTHER SPECIFIED			
0		= ±			
0.0		= ±0.15			
0.00		= ±0.10			
ANGLE:		= ±3°			
0.0		= ±1.5°			
REMOVE BURRS, BREAK SHARP EDGES R0.10 MAX DO NOT SCALE PRINT					
MTRL			HT TR		—
DWN	Caipwanlu		APVD	Lensing	
CHK	Kent	REL	Top-Link Electronics		
NAME		CUSTOMER DRAWING FOR 4.5H,2.5W, ANTENNA CLIPS			
SCALE	1:1	A4	DWG NO.	C-200019	

HT TR	FIN

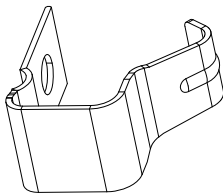
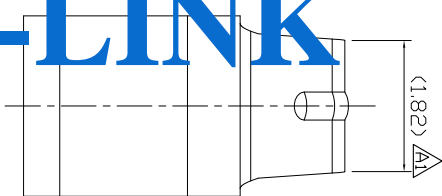
拓普联科

TOP-LINK



POINT OF MEASUREMENT

PICK&PLACE AREA



USED ON

-

- NOTES:
1. MATERIAL:
COPPER ALLOY,THICKNESS=0.15.
 2. PLATING:
1.25um(50u"Min Ni UNDER PLATING,
0.025um(1u"Min Au PLATING OVER ALL.
 3. SPECIFICATION:
3.1 ELECTRICAL CHARACTERISTICS:
CURRENT RATING : 10A.
VOLTAGE RATING : 50 VAC/DC.
LOW LEVEL CONTACT RESISTANCE:50mΩ MAX
 - 3.2 MECHANICAL CHARACTERISTICS:
CONTACT NORMAL FORCE: 50gf min PER PIN AT
WORKING STROKE
DURABILITY : MATED 10,000 CYCLES AT WORKING STROKE
WITHOUT DEGRADING
 - 3.3 ENVIRONMENTAL CHARACTERISTICS:
OPERATING TEMPERATURE RANGE : -20°C TO +70°C.
4. TAPE & REEL PACKAGING PER EIA481 STANDARD.
5. DIMENSION SHALL BE INTERPRETED PER ASME Y14.5M-2009.
6. HARMFUL MATERIAL CONTROL FOLLOW "RoHS"